



## Case Study - Corporate

### Atlas House, London

#### Project Specifications

Product Specified: NRES

Colour Specified: Black

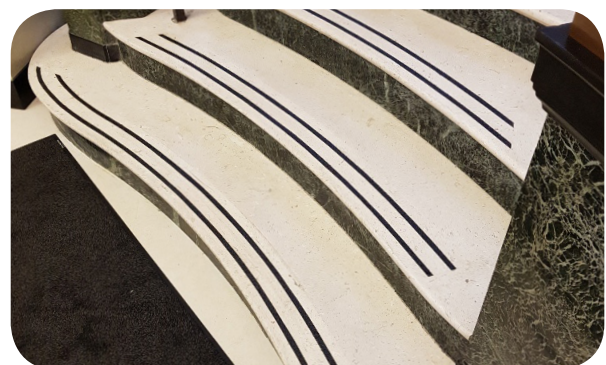
Sector: Corporate

#### Project Description

Atlas House, 1, King Street, London has just had Genesis RezTred® anti-slip resin NRES.16 installed on the steps leading from the ground floor reception, up to the first floor.

Bespoke templated stencils had to be carefully created on site to ensure that the RezTred® resin curves matched those of the existing curved steps.

The anti-slip resin serves dual purposes, firstly it provides an R12 level of slip resistance so that the possibility of slipping on the steps has been reduced to a minimum and secondly, the resin blends in beautifully with its surroundings and remains in keeping with the overall look of the building.



+44 (0)1642 713000 [info@genesis-gs.com](mailto:info@genesis-gs.com)  
[www.genesis-gs.com](http://www.genesis-gs.com)

 **Genesis**  
For the Perfect Finish