



## Case Study - Commercial

### City Hall in Sunderland

#### Project Specifications

Product Specified: Bespoke anodised nosing

Colour Specified: Black

Sector: Commercial

#### Project Description

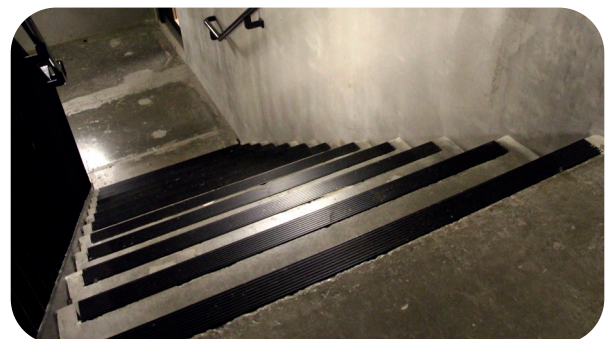
The city hall building is a cornerstone of the £500m Riverside development which is changing the face of the city center with a mix of offices, leisure and homes, and the new headquarters for Sunderland City Council.

For this project, Genesis manufactured and supplied bespoke stair nosing as due to the nature of the stairs a standard nosing would of been unsuitable.

Genesis were able to create and produce a bespoke nosing that provided the perfect solution.

We also provided an anodised finish to compliment the stairway!

Project address - New City Hall, Sunderland,  
Plater Way, SR1 3DP



+44 (0)1642 713000 [info@genesis-gs.com](mailto:info@genesis-gs.com)  
[www.genesis-gs.com](http://www.genesis-gs.com)

 **Genesis**  
For the Perfect Finish